



Lantern Lane, Mansfield, Ollerton, Nottinghamshire NG22 9YL

 3

 2

 1

 EPC

£1,200 PCM

P I N E W O O D





# Lantern Lane Mansfield Ollerton Nottinghamshire NG22 9YL

## £1,200 PCM

**3 bedrooms**  
**2 bathrooms**  
**1 receptions**

- 3 spacious bedrooms with built in wardrobes
  - 2 modern bathrooms
- Detached house with integral garage
- Cosy reception room, connected to the beautiful kitchen / diner
  - Located in Mansfield, Ollerton
  - Close to local amenities
  - Easy access to transport
- Quiet Lantern Lane, new build estate
  - Ideal family home
- EPC rated: B - Bond: £1442





**\*\*STUNNING NEWBUILD TO LET WITH IMPECCABLE FINISH AND CONVENIENCES\*\***

Located on the quiet Lantern Lane, Mansfield, this delightful detached house offers a perfect blend of comfort and convenience. With a generous living space of 694 square feet, this property is ideal for families or those seeking a peaceful retreat.

The home features a welcoming reception room, providing an inviting space for relaxation and entertaining guests. With three well-proportioned bedrooms, there is ample room for everyone to enjoy their own private space. The property also boasts two modern bathrooms, ensuring that morning routines run smoothly for all occupants.

One of the standout features of this property is the parking provision, accommodating up to two vehicles, which is a significant advantage in this area. The surrounding neighbourhood is known for its friendly community atmosphere and accessibility to local amenities, making it a desirable location for both families and professionals alike.

This house on Lantern Lane presents an excellent opportunity for those looking to settle in Nottinghamshire. With its practical layout and convenient features, it is a property that truly deserves your attention. Do not miss the chance to make this charming house your new home.

Video tour available, take a look round!

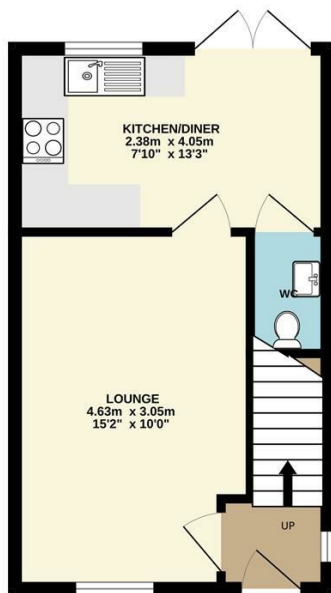
**\*\*If you would like to view this property, or apply for it, please click the 'Request Details' button on Rightmove and enter your information\*\***

**DISCLAIMER RENTAL**

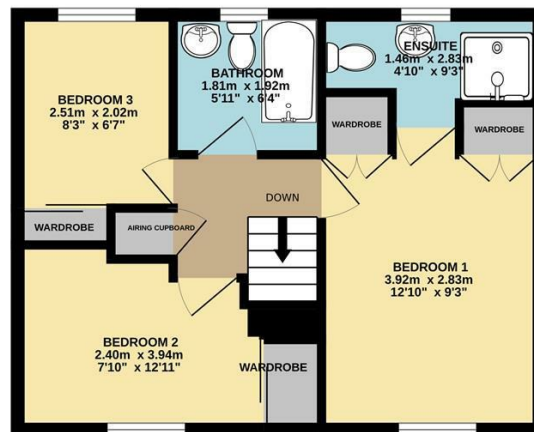
These particulars do not constitute part or all of a contract. While we endeavour to make our particulars fair, accurate and reliable, they are only a general guide to the property the photos are for reference purpose only, the white goods advertised may not be in situ and and if there are any points which are of particular importance to you or any particular white goods required please check with the office and we will be pleased to check the position on these



GROUND FLOOR  
28.4 sq.m. (305 sq.ft.) approx.



1ST FLOOR  
36.1 sq.m. (388 sq.ft.) approx.



TOTAL FLOOR AREA : 64.4 sq.m. (694 sq.ft.) approx.

Whilst every attempt has been made to ensure the accuracy of the floorplan contained here, measurements of doors, windows, rooms and any other items are approximate and no responsibility is taken for any error, omission or mis-statement. This plan is for illustrative purposes only and should be used as such by any prospective purchaser. The services, systems and appliances shown have not been tested and no guarantee as to their operability or efficiency can be given.  
Made with Metropix ©2025

Energy Efficiency Rating		Current	Potential
Very energy efficient - lower running costs			
(92 plus) <b>A</b>			
(81-91) <b>B</b>			
(69-80) <b>C</b>			
(55-68) <b>D</b>			
(39-54) <b>E</b>			
(21-38) <b>F</b>			
(1-20) <b>G</b>			
Not energy efficient - higher running costs			
England & Wales		EU Directive 2002/91/EC	

Mansfield branch  
24 Albert Street  
Mansfield, NG1  
01623 621001

Clowne branch  
26 Mill Street,  
Clowne, S43 4JN  
01246 810519

Clay Cross branch  
20 Market Street,  
Clay Cross, S45 9JE  
01246 251194

Chesterfield branch  
33 Holywell Street,  
Chesterfield, S41 7SA  
01246 221039



PINEWOOD